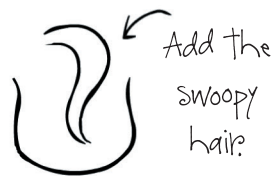


HOW TO DRAW JUDY MOODY



by Judy Moody artist
Peter H. Reynolds

Start
with a
letter "U."



Add the
swoopy
hair.



Add
3 or 4
bits of
hair on
each side.



Add her
famous curl.



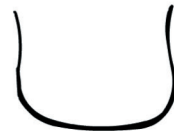
Flat "u"
nose and
mouth



Add shading.

Add her neck
and collar.

I've started —
you can
finish!



Please visit us at www.candlewick.com

Judy Moody is a registered trademark of Candlewick Press, Inc. Judy Moody font copyright © 2004 by Peter H. Reynolds. Illustrations copyright © 2017 by Peter H. Reynolds.

Copyright © 2005 by Megan McDonald and Peter H. Reynolds. Permission granted to copy for noncommercial use.